

■ ■ wissner-  
■ ■ bosserhoff



## Upholstered beds | hotel design

sentida





Photo: Riënne Wopereis, Model: Grietje Moerbeek-Visser \*1926, Django \*2017, Amina \*2015 & Seyni \*2013 | Photo title (Portrait): Riënne Wopereis, Model: Johanna Stadt-Martens \*1924 & Lena \*2011

## Designed to make you feel at home

sentida upholstered beds with a hotel design

We want to make sure your residents feel as comfortable as possible in a nursing home bed – they should feel at ease in their bed and room.

With our new upholstered beds made from high-quality materials from reputable partners we offer an excellent surface material. The surfaces impress on an international scale with their enormous variety of applications in the interior design of high-quality living and contract sectors, particularly in the medical sector. Perfectly coordinated collections and innovations allow padding solutions, furniture fronts and floor panels of all kinds to be combined into a single unit. Above all they are a hit due to their longevity and therefore represent real quality.

wissner-bosserhoff is a byword for high-quality beds and furniture solutions in retirement homes, in-patient and day patient nursing homes, hospitals and medical centers.

We set new standards –  
see for yourself on the following pages.  
Personal care in a pleasant atmosphere.

# Living concept Forest

sentida | Design HD-1

There is almost nothing so relaxing as a walk in the forest. The fresh air and the lush shades of green and brown refresh and invigorate us and help us clear our heads. This has even been scientifically proven: Japanese researchers have discovered that walking through the forest reduces blood pressure and heart rate. In addition, adrenaline levels are lower than after a walk in a city. This concept is just a suggestion – we will happily give you individual advice.



Nursing home bed sentida 5 HD-1, padding: smooth



Wood hue Cottage Pine



Silver-gray synthetic leather



Wall color



Decor colors





# Living concept Sea

sentida | Design HD-1

The taste of salt on your lips, wind in your hair and warm rays of sun on your skin. A day on the beach gives a feeling of peace and harmony. Close your eyes, listen to the waves, breathe in the fresh sea air and the vacation feeling of well-being quickly sets in. This concept is just a suggestion – we will happily give you individual advice.



Nursing home bed sentida 5-xl HD-1, Padding: square quilt



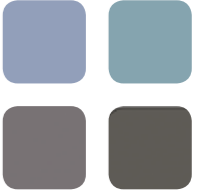
Wood hue Cottage Pine



Pearl synthetic leather



Wall color



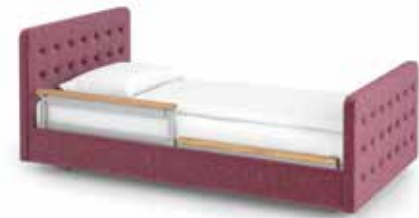
Decor colors

Image shells: ©pixabay.com

# Living concept Country

sentida | Design HD-4

Caught up in the hectic of everyday life, many people long for a life in the country. Colorful flower meadows, sweet-smelling roses, shady trees and babbling brooks provide fresh air and a place to unwind from everyday life. Yet only a very few people own a country house. Often just the right colors and accessories are enough to provide a little country flair. This is just a suggestion – we will happily give you individual advice.



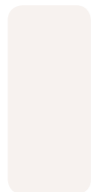
sentida 5-xl HD-4  
Padding: Deep buttoned



Wood color Lund birch



Fabric Rose (Mailo 4520)



Wall colors



Decor colors



# Other design options

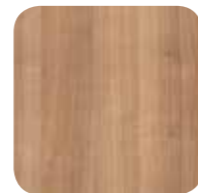
3 examples of successful combinations of fabric and wood decors



sentida 5  
Design HD-1  
square quilt



Sea (Mailo 5520)



Havana cherry (R42006)



sentida 5  
Design HD-1  
square quilt



Green, floral (Aurora 6520)



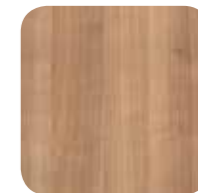
Lund birch (R35018)



sentida 5  
Design HD-3  
Deep buttoned



Stone (Mailo 8520)



Havana cherry (R42006)

# Synthetic leather



Silver gray



Pearl



Birch



Pebble



Cashmere



Smoke



Cherry



Corn



Lime

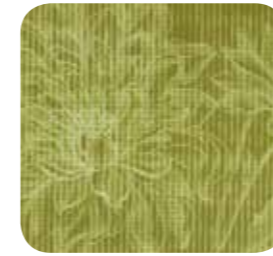


Royal

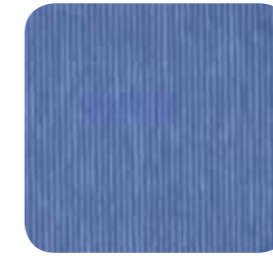
The special feel, specific features and expressive embossing lend the high-quality upholstery materials their individual character. Beyond the exceptional designs, the surfaces are characterized by their real ease of providing nursing care. Synthetic leather made from PVC is a hit due to its longevity and therefore represents real quality. More information available upon request.



# Fabrics



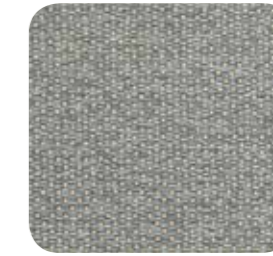
Green, floral (Aurora 6520)



Blue, striped (Agon 5520)



Gray, striped (Agon 8520)



Gray, polka dot (Flint 8520)



Meadow (Mailo 6520)



Sea (Mailo 5520)



Sand (Mailo 1521)



Stone (Mailo 8520)



Rose (Mailo 4520)

These furnishing fabrics are unrivaled in their cleanliness and neatness. The patented innovative system means that bacteria, dirt and moisture do not stand a chance. Beautiful designs on premium-quality fabric offer extensive combination options between furnishing and decorative fabrics. Brand name yarns made from Polyester FR or Trevira CS are used here. More information available upon request.



## Decors | Wood decors\*



Volcano white (U11502)



Lund birch (R35018)



Lindberg oak (R20021)



Cottage pine (R55023)



Suomi pine gray (R55022)



Suomi pine brown (R55021)



Havana cherry (R42006)



Stirling oak (R38006)



Natural beech (R24015)



Beech (R24034)



Cherry (R42002)

## Design head/foot sections | Cushioning



Head end 650 | medium



Head end 800 | medium



Foot end 450 | low



Foot end 600 | medium



Padding: smooth



Padding: Square quilt



Padding: Deep buttoned

## Technical details

Movability	At every bed height
Castors	50 mm double castors, completely covered by homely undercarriage
Can be braked	One pedal brake for each axle with 2-castor central braking system
Safe working load	270 kg
Height adjustment	27 - 80 cm
Patient surface	sentida: 87x200/210/220 cm   sentida 5-xl: 100x200/210/220 cm



---

## Members of LINET Group

### wissner-bosserhoff GmbH

Hauptstraße 4-6 | 58739 Wickede (Ruhr) | Germany

Phone: +49 2377.784-0 | Fax: -163 | [info@wi-bo.de](mailto:info@wi-bo.de) | [wi-bo.com](http://wi-bo.com)

